

Open House

Environmental Assessment

Expansion of New Liskeard Landfill Site

Draft Terms of Reference

Monday, May 9th, 2011
4:00pm to 8:00pm
Dymond Community Hall
165 Drive-In-Theatre Road

Purpose of Open House

Introduction to Project

- To explain background / need
- To explain work completed to date
- To outline the proposed site expansion

Discuss the Planning Process

- To obtain your input to the draft Terms of Reference for the Environmental Assessment

Issues, Concerns, Opportunities for Involvement

- To hear about your issues and concerns
- To outline future opportunities for your involvement

Project History

Recent Developments

- **2009:** The City's Draft Waste Management Master Plan (WMMP) promotes increased recycling and waste diversion and identifies need for new landfill capacity
- **2009:** New Liskeard Landfill site operation is suspended (Site reached capacity)
- **2009/2010:** City's feasibility study proposes New Liskeard Site expansion
- **2016:** Haileybury Landfill Site expected to reach capacity

Project Objectives

The City's Objectives

- To establish new landfill capacity by 2016
- To obtain approval under the Environmental Assessment Act for the New Liskeard Landfill Site



Current Waste Management Practice

Recycling Waste Diversion

- Material Recovery Facility (MRF)
- Collection of recyclable materials

Solid Waste Collection

- Residential waste
- Industrial, commercial and institutional solid waste
- Special waste
- Hazardous waste (at landfill , e.g. old/used paint, oils, batteries, etc.)

Waste Disposal

- New Liskeard Landfill
(operation suspended in June 2009)
- Haileybury Landfill services the entire City as well as the Town of Cobalt

Current Waste Management Practice

The New Liskeard Landfill

- Used for waste deposition since about 1916
- Landfilling suspended in June 2009
- Located approx. 3 km west of the former Town of New Liskeard
- Total property area is 32 ha
- Approx. 5 ha have been landfilled
- Contaminants managed through natural attenuation
- On-going groundwater monitoring – no contamination off site



Waste Management Master Plan (Draft)

Objectives

- Identify long-term approach to solid waste management

Approach

- Review of waste management practices and infrastructure
- Review of waste generation (waste streams; existing/future waste generation rates)
- Review of approved landfill capacity
- Review of market conditions

Recommendations

- Aim for 60% waste diversion and recycling
- Requirement for new landfill capacity

New Landfill Capacity – Feasibility Study

Objectives

- Identify most feasible option for establishing new capacity for long-term solid waste disposal

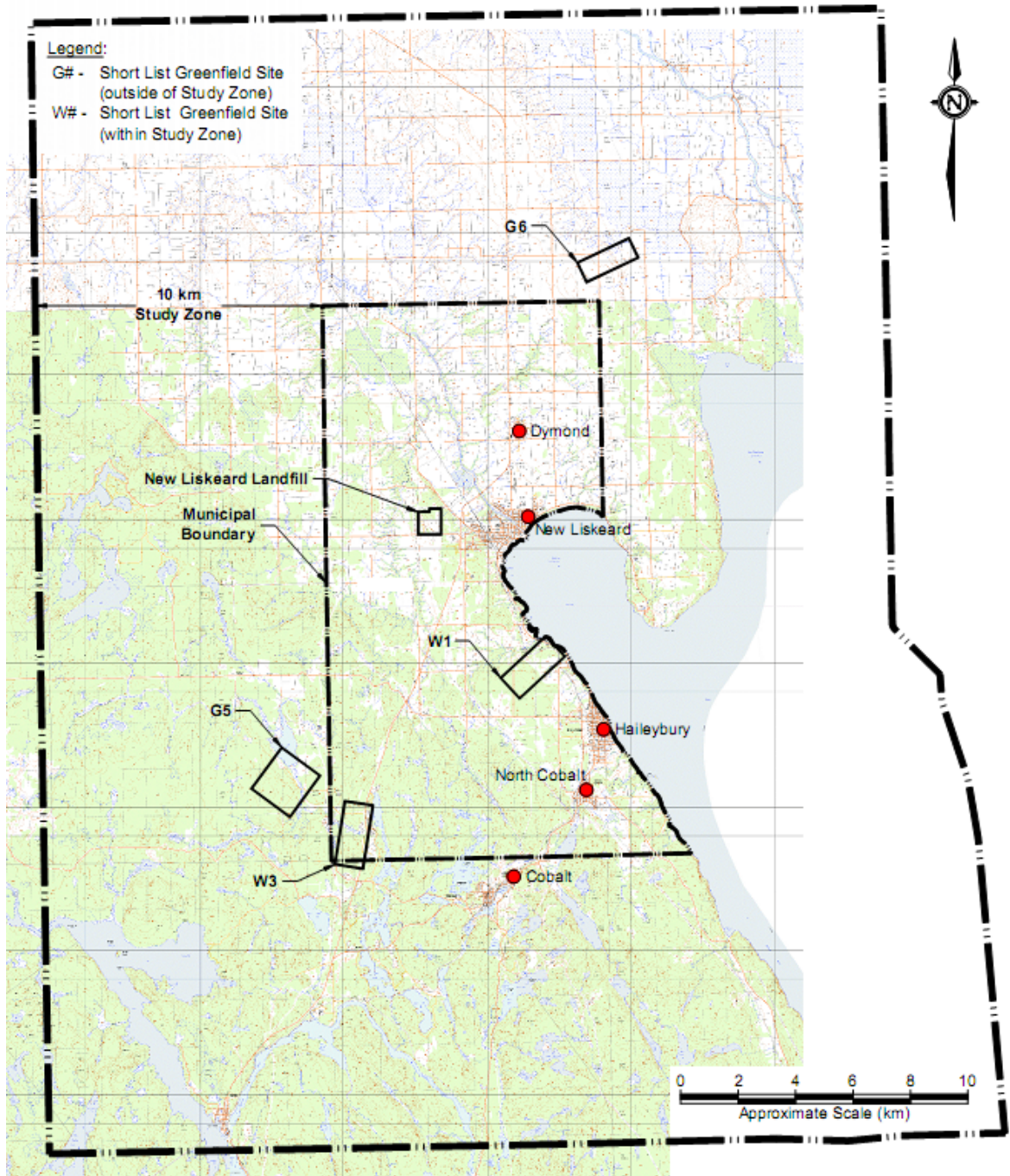
Approach

- Assessment of existing sites
- Assessment of new sites
- Comparison of the preferred existing vs. a preferred new site
- Determination of the overall preferred site

Results

- The expansion of the existing ***New Liskeard Landfill Site is the City's preferred location*** for providing new landfill capacity

New Liskeard Landfill Site - Preliminary Regional Study Area



Project Description

The “Proposed Project” is the expansion of the existing New Liskeard landfill

Proposed Project Rationale

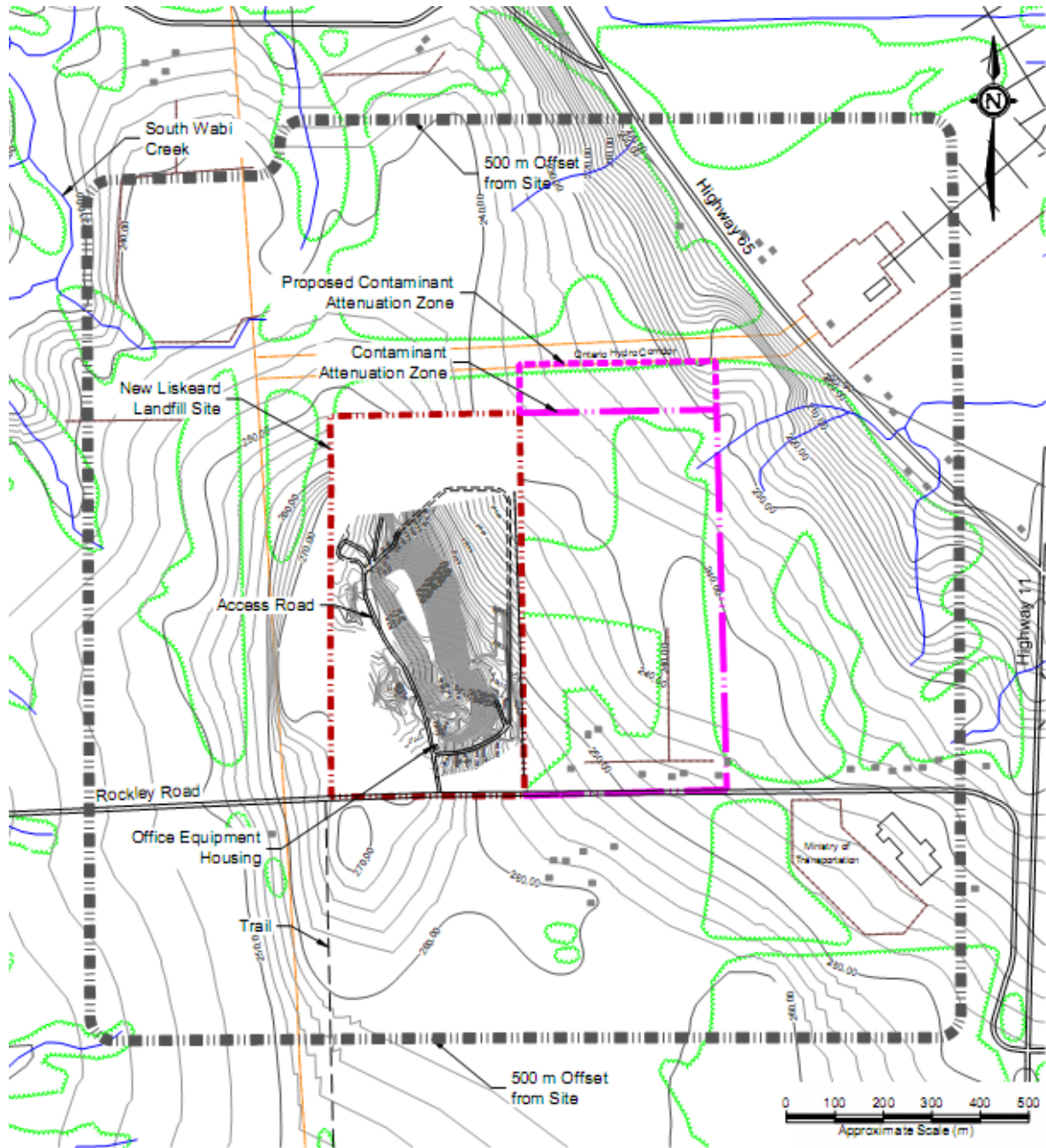
- Municipal recycling/diversion efforts aiming at 60% diversion
- No approved municipal landfill capacity beyond 2016
- City identified need for new landfill capacity in addition to waste diversion and recycling efforts in place
- Feasibility Study recommends expansion of New Liskeard Site
- City Council approved proceeding with the proposed project

Project Description

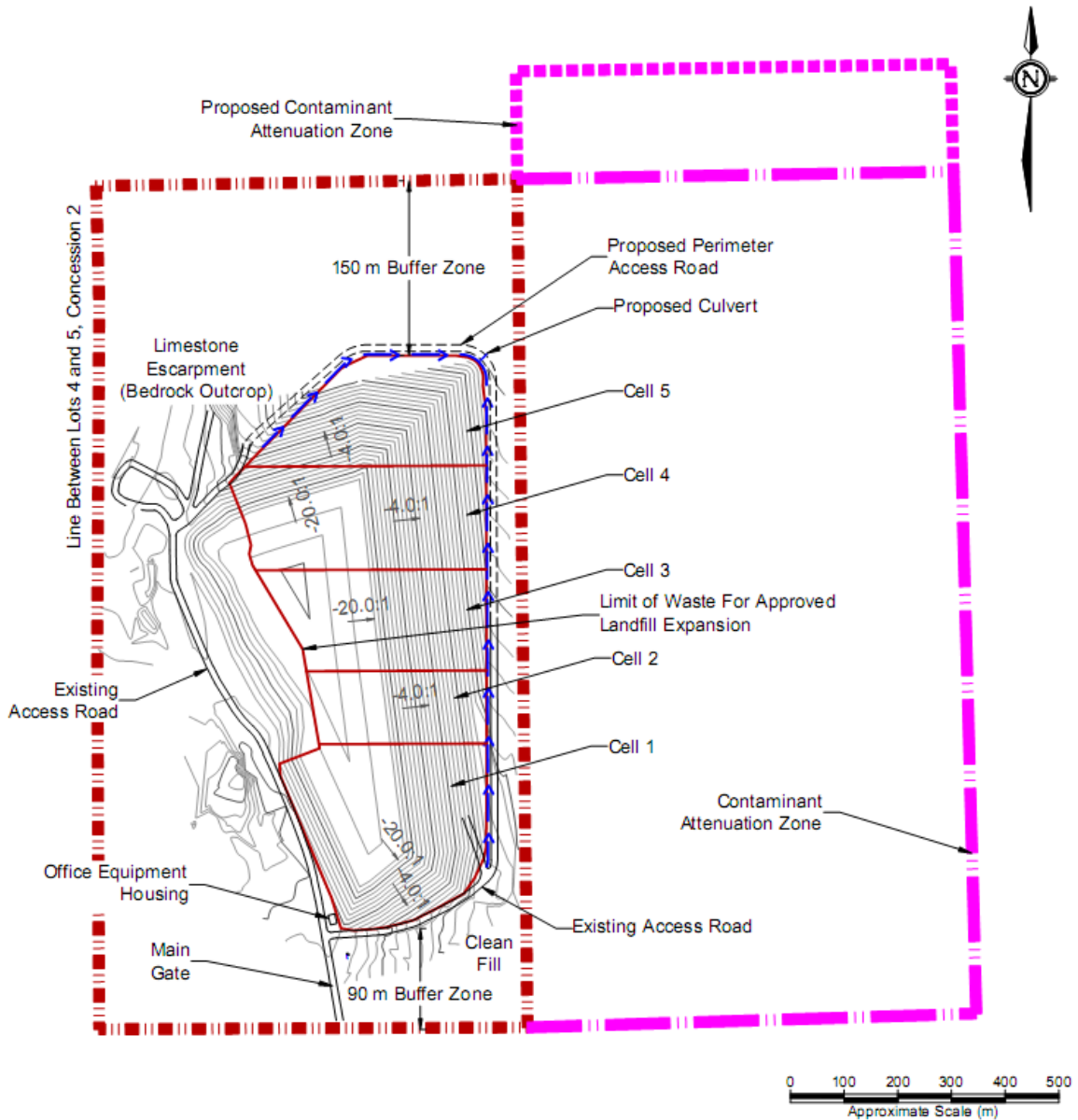
Proposed Undertaking

- Provision of max. 685,000 m³ (estimated waste volume over 30-year time span)
- Landfill expansion to the east
- Additional footprint area 2.61 ha
- Height above base elevation 26 m
- Continuation of Contaminant Attenuation Zone (zone within which contaminants are managed)
- Landfill to be developed sequentially in separate cells
- Each cell is to be immediately closed and landscaped once it has been filled to capacity

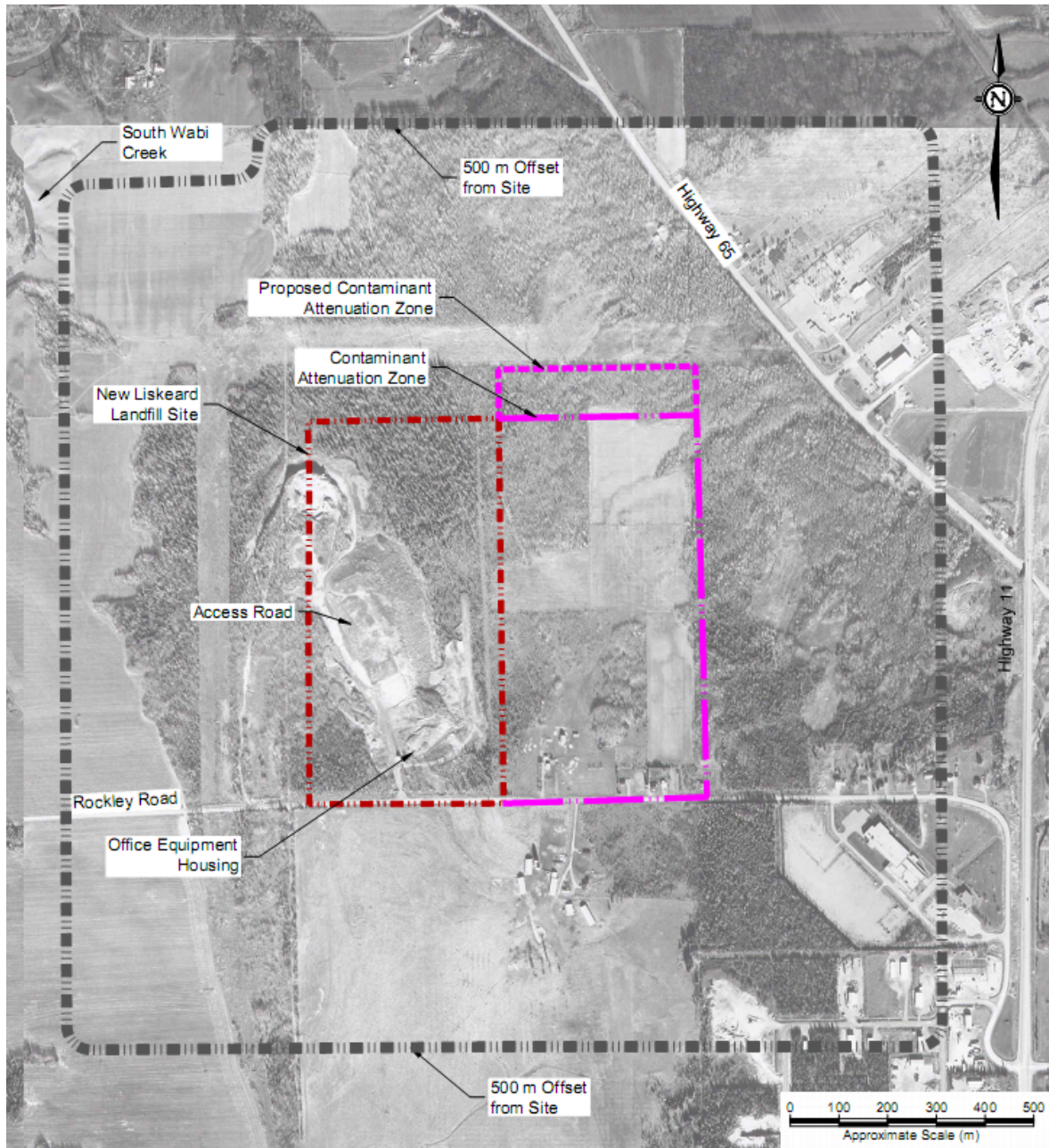
New Liskeard Landfill Site - Preliminary Local Study Area



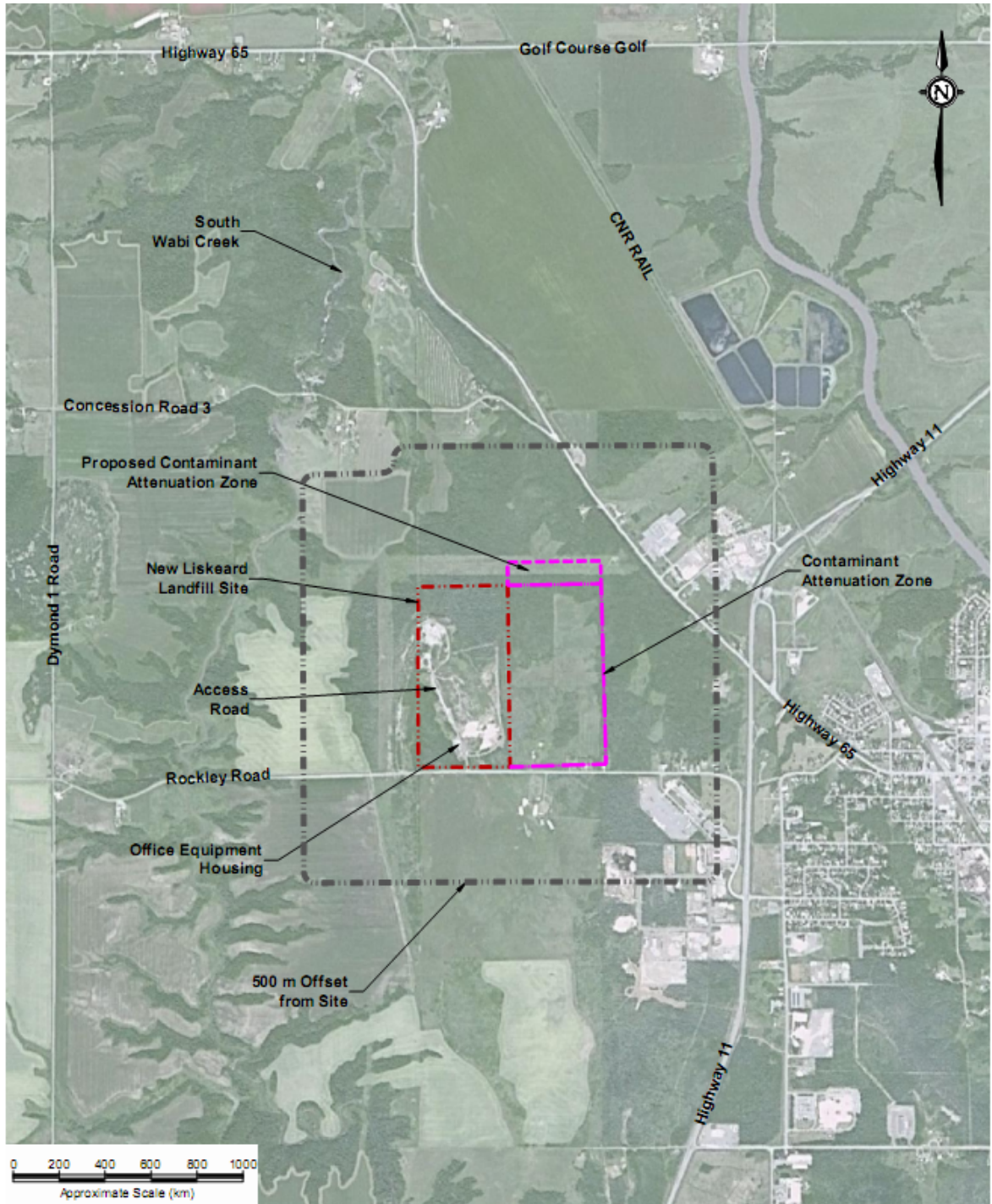
New Liskeard Landfill Site, Expansion Design



New Liskeard Landfill Site Local Setting



New Liskeard Landfill Site Local Setting



Schedule

Planning Steps and Preliminary Project Schedule

Activities / Quarter Year	Year 2011				2012				2013		
	1st	2nd	3rd	4th	1st	2nd	3rd	4th	1st	2nd	
Terms of Reference Process											
Environmental Assessment											
Design and Engineering											
Permits and Approvals											
Construction (Start)											★



Environmental Assessment – Why?

Regulatory Requirements

- Ontario Regulation 101/07 (Waste Management Projects): Landfill Expansions exceeding 100,000 m³ require an Environmental Assessment
- Ontario Environmental Assessment Act requirements include
 - Terms of Reference (TOR)
 - Environmental Assessment (EA)



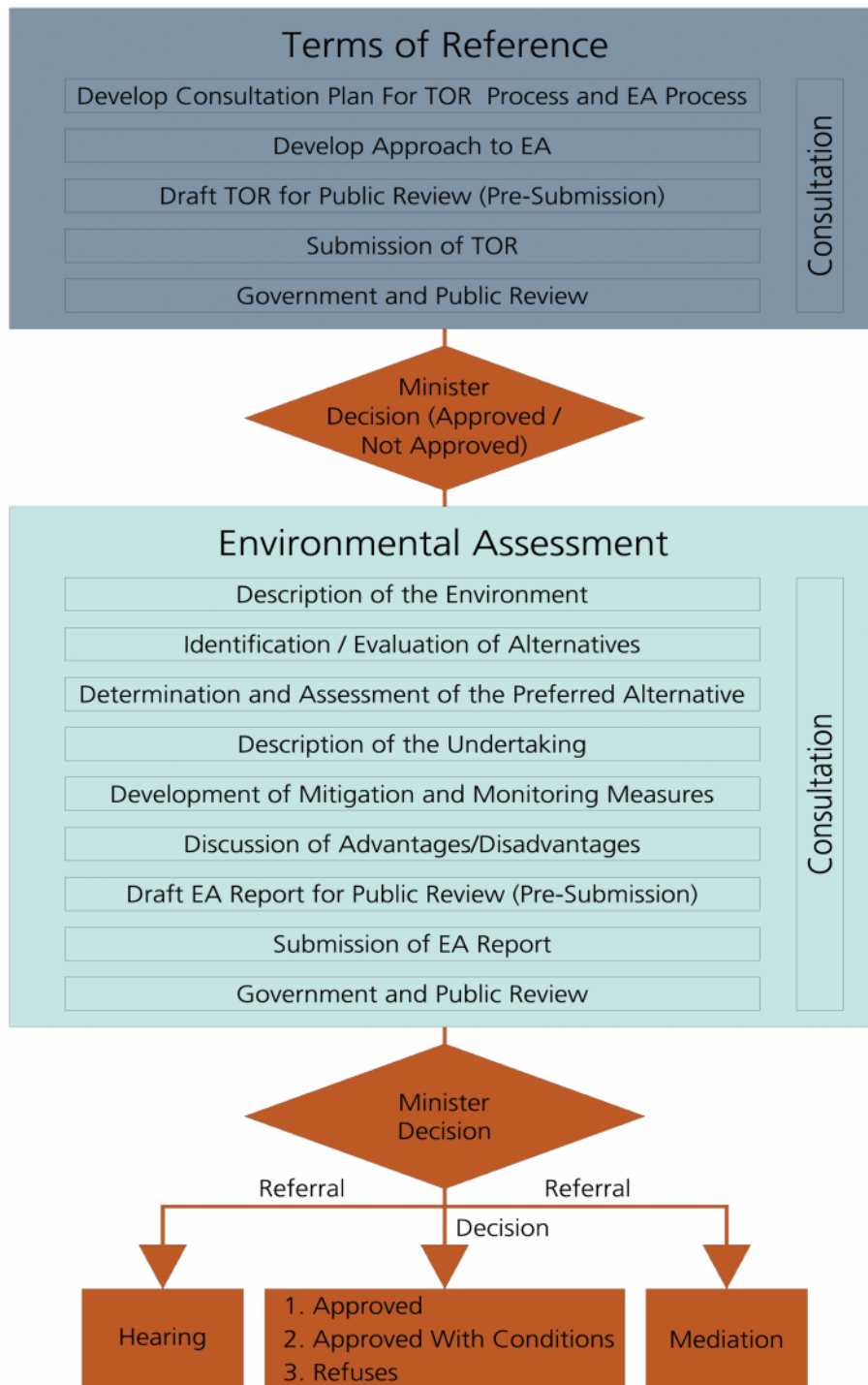
Environmental Assessment – Overview

Key Elements

- Description of the Project
- Environmental characterization of the project area
- Identification / evaluation of alternatives
- Assessment of environmental effects
- Development of mitigation and monitoring measures
- Consultation and engagement (public, stakeholders, government agencies, Aboriginal communities)



Environmental Assessment – Process



Terms of Reference Overview

Purpose

- Provide framework and requirements for EA
- Provide opportunity for public involvement in study design

Key Content

- Approach to identification / evaluation of alternatives
- Approach to selection of the preferred alternative (the Project)
- Approach to assessment of environmental effects
- Approach to mitigation / monitoring measures
- Approach to consultation
- Record of consultation

Terms of Reference “Alternatives To”

"Alternatives To"

- *Definition:* functionally different ways of addressing the identified problem

Screened "Alternatives To"

- Do nothing
- Landfilling as currently practiced
- Thermal Treatment
- Recycling / Waste Reduction Program
- Energy from Waste Technologies

Proposed EA Focus:

***Continued recycling/waste
reduction and
new landfill capacity***

Terms of Reference “Alternative Methods”

“Alternative Methods”

- *Definition:* different ways of implementing the preferred “Alternative To”

“Alternative Methods”

- Alternative site locations
- Alternative designs

Proposed EA Focus:

***Alternative designs for
New Liskeard Site Expansion***

Terms of Reference Evaluation of Alternative Designs

Criteria for Evaluation

- **Natural Environment and Resources**
 - Effects on air quality (incl. Greenhouse Gas Emissions)
 - Effects on groundwater
 - Effects on freshwater quality
 - Effects on wildlife and wildlife habitat (including wetlands)
 - Effects on aquatic environments and species
- **Social and Cultural Environment (incl. Public Health & Safety)**
 - Effects on road safety
 - Effects on water supply
 - Nuisance effects (e.g., litter, odour, visual aesthetics)
 - Effects on land use (incl. traditional uses of land and resource)
 - Effects on heritage resources
 - Effects on existing infrastructure
- **Economic Factors**
 - Effects on local economy; municipal economics (capital cost, operating cost, closure and post closure cost)
 - Implementation time/potential for disruption of operation
 - Technical and operational Aspects
 - Suitability of technology (e.g., is it a proven technology? How well does it operate under existing environmental conditions and in light of the waste characteristics)
 - Flexibility with respect to waste quantities and characteristics
 - Compatibility with City and provincial programs, plans and policies

Terms of Reference Consultation Plan

Consultation Plan Purpose

- Define consultation objectives
- Outline process for identifying interested parties and Aboriginal communities
- Determine consultation activities
- Define consultation schedule



Terms of Reference Consultation Plan

Proposed Consultation Activities

- Public meetings
- Direct mail outs
(add your name to the mailing list!)
- Public Notices
- Project website:
www.temiskamingshores.ca
- (Draft) Report reviews (pre-submission review; to be announced)
- Involvement of Aboriginal communities

Contact:

David Treen
Manager of Environmental Services
City of Temiskaming Shores
325 Farr Drive
P.O. Box 2050
Haileybury, Ontario P0J 1K0
www.temiskamingshores.ca

Terms of Reference

Next Steps

- On-going public review of Draft TOR (May 2011)
- Submission of Proposed TOR to Ministry of Environment (May 2011)
- 30-Day public review of proposed TOR (May/June 2011)
- Minister's decision (Summer 2011)

Upon Approval of Terms of Reference

- Commencement of EA (Summer /Fall 2011)

