



38 Armstrong St S, New Liskeard

400A Private Secondary Underground New Connect

Pole Barcode CMPDCQ Transformer 3088

Bucket Accessible

Hydro One

WL1

- Supply and install roughly 26 meters of 3/0 quadruplex to WL2
- Make connections mid span to buss (TX 3088)

WL2

- Supply and install a new 35' class 5 wood pole (set pole directly behind wooden parking box)
- Supply and install a 20" plate anchor and guy with 3 meter lead distance
- Attach 3/0 triplex from WL1
- Run customer supplied secondary up pole
- Make connections

WL3

- Supply and install a new 347/600V, 9S meter

FBC to send layout to MTECH - prepare equipment for lines and schedule for MFT

Customer / Contractor

supply secondary conductor to ESA specification

supply and install barrier around pole/anchor/meter base location

See SCHEDULE B - CUSTOMER OBLIGATIONS

LINETYPES

- OVERHEAD - 1PH
- OVERHEAD - 2PH
- OVERHEAD - 3PH
- OVERHEAD - Sec.
- OVERHEAD - Priv. 1PH
- OVERHEAD - Priv. 2PH
- OVERHEAD - Priv. 3PH
- UNDERGROUND - 1PH
- UNDERGROUND - 2PH
- UNDERGROUND - 3PH
- UNDERGROUND - Sec.
- UNDERGROUND - Priv. 1PH
- UNDERGROUND - Priv. 2PH
- UNDERGROUND - Priv. 3PH
- SUBMARBINE - 1PH
- SUBMARBINE - 2PH
- SUBMARBINE - 3PH

COLOR SCHEME

- Existing
- Hydro One or Contractor
- Work by Customer
- Hydro One Only
- Work by Others (Bell/LDC)

SYMBOLS

- ⊙ PROPOSED POLE - Wood, Composite, Steel, Joint Use/Customer
- EXISTING POLE - Wood, Composite, Steel, Joint Use/Customer
- /H - U/G TRANSITION (DIP/RISER) - Primary, Secondary
- ⊕ ANCHORS/DOWN GUY - Hydro, Private/Joint Use, Push Pole
- ⊕ OVERHEAD SWITCH - Fused, Solid, Line Opener
- ⊕ OVERHEAD SWITCH - OCR, Electronic OCR, PT
- WORK LOCATION
- ⊕ UNDERGROUND VAULT - 1PH, 3PH
- ⊕ CAPACITOR - 1PH, 3PH
- ⊕ OVERHEAD REGULATOR - 1PH, 3PH
- ⊕ OVERHEAD TRANSFORMER - 1PH, 3PH
- ⊕ OVERHEAD STEP TRANSFORMER - 1PH, 3PH
- ⊕ UNDERGROUND STEP TRANSFORMER - 1PH, 3PH
- ⊕ UG TRANSFORMER - 1PH, 1PH PVT, Transclosure
- ⊕ UG TRANSFORMER - 3PH
- ⊕ SECONDARY JUNCTION - Vault, Pedestal
- ⊕ METERING - 1PH, 3PH, Net, Primary
- ⊕ LOAD INTERRUPTER SWITCH - Load Break, Remote Load Break
- ⊕ STREETLIGHT - Hydro, Private
- ⊕ KIOSK - 1PH, 3PH
- ⊕ JUNCTION - Splice, Sleeve
- ⊕ REMOVAL
- ⊕ OPEN POINT
- ⊕ COMMUNICATING FAULTED CIRCUIT INDICATOR (CFCI)
- ⊕ TAP JUNCTION - Fly Tap, Midspan Tap

LEGEND



KEY MAP (NTS)

1. ALL DIMENSIONS SHOWN IN METERS UNLESS NOTED OTHERWISE.
2. IF TITLEBLOCK SCALE = CUSTOM, SCALE IS UNCOMMON AND CONSIDERED NOT TO SCALE.

Contractor Name : XX
Contractor Phone : XX

GENERAL NOTES

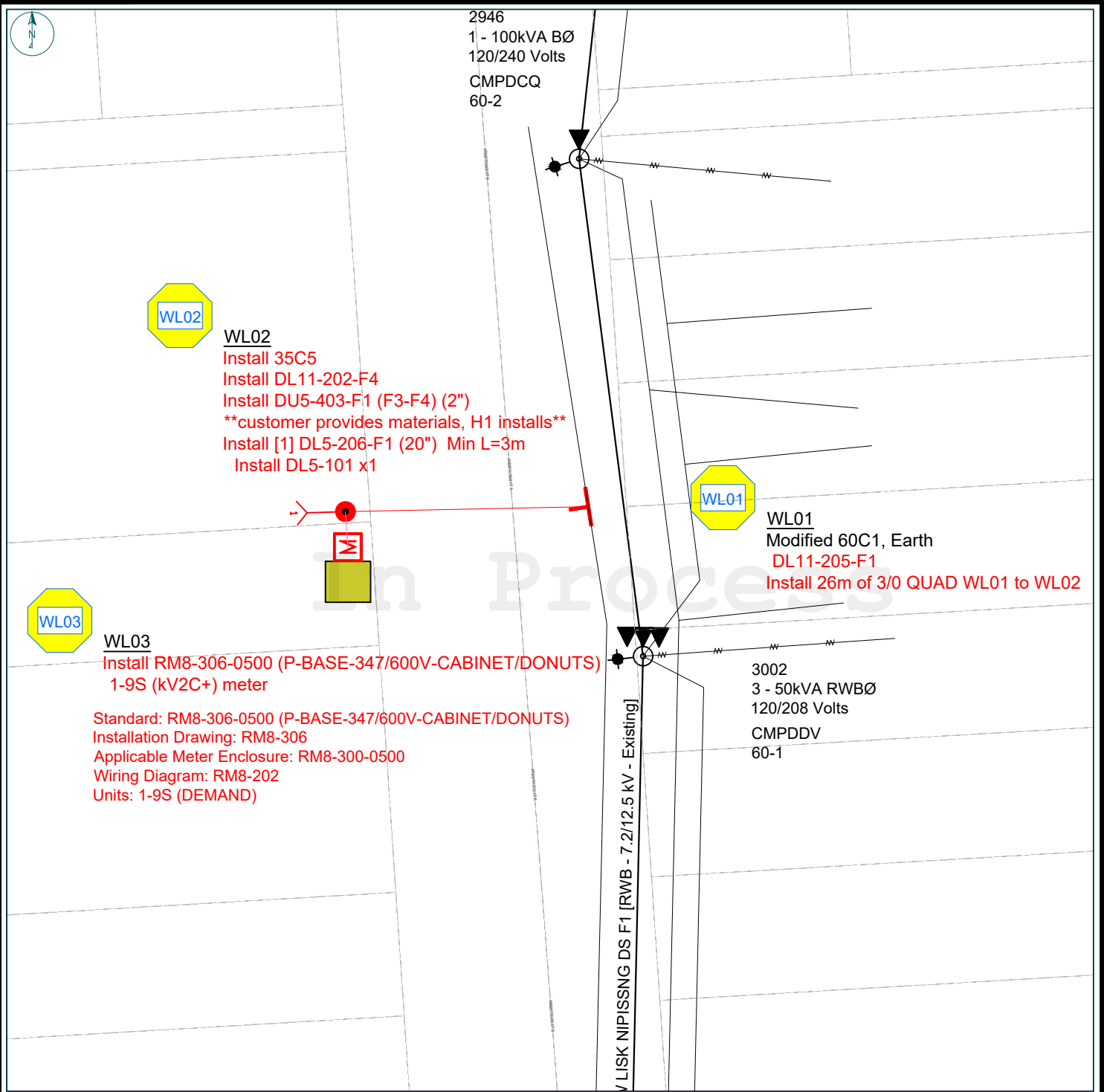
© Copyright Hydro One Networks Inc. All rights reserved. This drawing may not be reproduced or copied, in whole or in part, in any printed, mechanical, electronic, film, or other distribution and storage media or used in any information storage or retrieval system without the written consent of Hydro One Networks Inc. Information contained in this drawing is considered to be confidential. Recipients shall not use this drawing for its intended purpose and shall take necessary measures to prevent disclosure or knowledge by outside parties.



Hydro One Networks Inc.
DESIGN SERVICES
DEMAND LAYOUT

Address: 38 ARMSTRONG ST New Liskeard	
Notification Type: Secondary Service	Notification: 303698241
Township: Dymond	Work Order: 64818130
Lot / Concession: /	Construction Measure: 971657
Rate Class: General Svc Energy 2TIER RPP	Service Size: 400
DS Station/Feeder: NEW LISK NIPISSNG DS F1	Meter Wiring Diagram: RM8-202-0500
Primary/Secondary Voltage: 7.2/12.51 kV / Three 347/600	Scale: Custom
Transformer: 3088	ADET: Beaudoin, Tyler
Switch: 727	Approver: RANGER Adam
Service Center: New Liskeard	Approval Date: 2/13/2025
	Page: 1/1

TITLE BLOCK REV 03 - FEBRUARY 2024



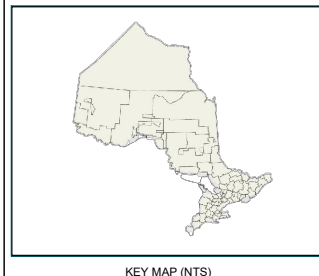
WL02
 Install 35C5
 Install DL11-202-F4
 Install DU5-403-F1 (F3-F4) (2")
 customer provides materials, H1 installs
 Install [1] DL5-206-F1 (20") Min L=3m
 Install DL5-101 x1

WL01
 Modified 60C1, Earth
 DL11-205-F1
 Install 26m of 3/0 QUAD WL01 to WL02

WL03
 Install RM8-306-0500 (P-BASE-347/600V-CABINET/DONUTS)
 1-9S (kV2C+) meter
 Standard: RM8-306-0500 (P-BASE-347/600V-CABINET/DONUTS)
 Installation Drawing: RM8-306
 Applicable Meter Enclosure: RM8-300-0500
 Wiring Diagram: RM8-202
 Units: 1-9S (DEMAND)

TITLE BLOCK REV 03 - FEBRUARY 2024

LINETYPES		SYMBOLS	
---	OVERHEAD - 1PH	●	PROPOSED POLE - Wood, Composite, Steel, Joint Use/Customer
---	OVERHEAD - 2PH	○	EXISTING POLE - Wood, Composite, Steel, Joint Use/Customer
---	OVERHEAD - 3PH	⊙	O/H - U/G TRANSITION (DIP/RISER) - Primary, Secondary
---	OVERHEAD - Sec.	⊕	ANCHORS/DOWN GUY - Hydro, Private/Joint Use, Push Pole
---	OVERHEAD - Priv. 1PH	⊕	OVERHEAD SWITCH - Fused, Solid, Line Opener
---	OVERHEAD - Priv. 2PH	⊕	OVERHEAD SWITCH - OCR, Electronic OCR, PT
---	OVERHEAD - Priv. 3PH	⊕	WORK LOCATION
---	UNDERGROUND - 1PH	⊕	UNDERGROUND VAULT - 1PH, 3PH
---	UNDERGROUND - 2PH	⊕	CAPACITOR - 1PH, 3PH
---	UNDERGROUND - 3PH	⊕	OVERHEAD REGULATOR - 1PH, 3PH
---	UNDERGROUND - Sec.	⊕	OVERHEAD TRANSFORMER - 1PH, 3PH
---	UNDERGROUND - Priv. 1PH	⊕	OVERHEAD STEP TRANSFORMER - 1PH, 3PH
---	UNDERGROUND - Priv. 2PH	⊕	UNDERGROUND STEP TRANSFORMER - 1PH, 3PH
---	UNDERGROUND - Priv. 3PH	⊕	UG TRANSFORMER - 1PH, 1PH PVT, Transclosure
---	UNDERGROUND - Priv. Sec.	⊕	UG TRANSFORMER - 3PH
---	SUBMARBINE - 1PH	⊕	SECONDARY JUNCTION - Vault, Pedestal
---	SUBMARBINE - 2PH	⊕	METERING - 1PH, 3PH, Net, Primary
---	SUBMARBINE - 3PH	⊕	LOAD INTERRUPTER SWITCH - Load Break, Remote Load Break
---		⊕	STREETLIGHT - Hydro, Private
		⊕	KIOSK - 1PH, 3PH
		⊕	JUNCTION - Splice, Sleeve
		⊕	REMOVAL
		⊕	OPEN POINT
		⊕	COMMUNICATING FAULTED CIRCUIT INDICATOR (CFCI)
		⊕	TAP JUNCTION - Fly Tap, Midspan Tap



- ALL DIMENSIONS SHOWN IN METERS UNLESS NOTED OTHERWISE.
- IF TITLEBLOCK SCALE = CUSTOM, SCALE IS UNCOMMON AND CONSIDERED NOT TO SCALE.

Contractor Name : XX
 Contractor Phone : XX

© Copyright Hydro One Networks Inc. All rights reserved. This drawing may not be reproduced or copied, in whole or in part, in any printed, mechanical, electronic, film, or other distribution and storage media or used in any information storage or retrieval system without the written consent of Hydro One Networks Inc. Information contained in this drawing is considered to be confidential. Recipients should not use this drawing for its intended purpose and shall take necessary measures to prevent disclosure or unauthorized use.

hydro one Hydro One Networks Inc.	
DESIGN SERVICES DEMAND LAYOUT	
Address : 38 ARMSTRONG ST New Liskeard	
Notification Type : Secondary Service	Notification : 303698241
Township : Dymond	Work Order : 64818130
Lot / Concession : /	Construction Measure : 971657
Rate Class : General Svc Energy 2TIER RPP	Service Size : 400
DS Station/Feeder : NEW LISK NIPISSNG DS F1	Meter Wiring Diagram : Wiring Diagram
Primary/Secondary Voltage : 7.2/12.51 kV / Three 347/600	Scale : Custom
Transformer : 3088	ADET : Beaudoin, Tyler
Switch : 727	Approver : RANGER Adam
Service Center : New Liskeard	Approval Date : 2/13/2025
	Page : 1/1

In Process

Schedule B

Customer Obligations Letter

Project Type: New Connect

Customer: City of Temiskaming Shores

Required Execution Date of Contract: Aug 12, 2025

SECTION 1: Contact Information

Distributor:	Hydro One Networks Inc. HST # 870865821 RT001 ECRA/ESA Licence No. 7002572	Hydro One's Field Business Centre Address:	500 Barrydowne Road Sudbury, ON P3A 4R8
Hydro One's Field Business Centre Hours of Operation:	Monday to Friday 7:00 a.m. to 4:30 p.m.	Hydro One's Field Business Centre: Phone Number:	1-888-835-9444
Hydro One's Field Business Centre: E-mail Address:	zone6scheduling@hydroone.com	Hydro One's Field Business Centre: Fax Number	1-705-566-6253
Customer ("you or your"):	City of Temiskaming Shores	Customer's Billing Address:	Haileybury ON P0J 1K0

In Process

SECTION 2: Work Order Details

Notification Number:	303698241	Concession:	
Work Order Number:	64818130	Lot:	
Construction Measure Number:	971657	Township:	New Liskeard
		Address:	38 ARMSTRONG ST New Liskeard

SECTION 3: Customer Obligations

Schedule B Customer Work:

- Provide all secondary wire to current ESA specifications. Provide necessary coil at utility end (pole/padmount) for Hydro One to connect.
- Provide clean mason sand for Hydro One to cover wires. The remainder of backfill is your responsibility.
- For foundation mounted operated equipment 2 m (preferred) from roadway curb. Minimum shall be 1 m. If 1 m cannot be achieved, bollards shall be installed per DU6-107-0500.
- Supply & install meter base (see list of currently approved meter bases on Hydro One website).
- (UG) Provide conduit/straps/bolts for Hydro One to run wire up pole.
- Three weeks before connection arrange for delivery of CTs and P-base enclosure. Mount P-base on exterior wall so that window is 5-ft above ground level (1/4" lugs & shields or tap con screws only).
- Install main disconnect with a 4' x 4' lockable metering cabinet on load side of disconnect.
- Install 1-1/4" solid conduit with factory bends (include pull rope) from metering cabinet outside into P-base enclosure.
- (Under Ground) Provide conduit/straps/bolts for Hydro One to run wire up pole.
- supply and install barrier around pole/anchor/meter base location.



To Whom it may Concern,

Re: Potential delays due to seasonal road restrictions

We wanted to advise you of possible seasonal road restrictions that could delay scheduling your connection if we are unable to travel to your property. The Ministry of Transportation along with townships and municipalities may have half-load road restriction by-laws in place.

These road restrictions may be in place for March and April in Southern Ontario and for March, April and May in Northern Ontario. It is possible these restrictions may be extended at your township/municipality's discretion.

If reduced load restrictions are in effect in your township/municipality, no commercial vehicle or trailer above a designated weight per axle may be used on selected roads during this period to prevent damage to roads.



The latest version of the “CSA Approved Meter Socket Base” document which is located on the Hydro One website will be considered acceptable. Meter Socket Base models not listed in this “CSA Approved Meter Socket Base” document, may be installed on the condition the model complies with the “Meter-Base Requirements” listed below. The models provided in this document are examples that are known to comply with the Hydro One requirement. Any deviation from this list of requirements must be approved by Hydro One prior to installation. Failure to install a Meter-Base as described in this document may result in the refusal to connect the service. Please refer to the [Hydro One Retail Metering Guide](#) for additional information.

In this document, “Meter Socket Base” will be used interchangeably with “Meter-Mounting Device.”

Meter-Mounting Device Requirements

All Meter-Mounting Devices must meet these requirements:

No.	Requirement
1.	Approved to CSA C22.2 No.115
2.	Accommodate meter ring or means to secure meter in place with tamper-proof seal.
3.	Transformer-Rated Meter-Mounting Devices must have a test switch, no automatic by-pass or shorting circuit.
4.	Neutral conductor or bus shall not be bonded to the grounding conductor at the Meter-Mounting Device
Notes	<ol style="list-style-type: none"> Meter-Mounting Device to be ordered and installed with OEM insulated neutral kit listed. Unless certified by the OEM using OEM equipment, field modification or alterations (e.g. drilled holes, altered lug connector) to the Meter-Mounting Device are not permitted unless approved by Hydro One. Meter-Mounting Device shall not be used to provide tapping for a second service box.

Additionally, if Hydro One owns underground cable and is accountable for line side cable connection in Meter-Mounting Device:

No.	Requirement
1.	Oversize Meter-Mounting Device with a minimum dimension of 17 H x 12 W x 4 ¾ D inch (432 x 305 x 121mm).
2.	Space above line side connection shall accommodate a half-loop (180 degrees) of extra cable length for frost loop and reconnection while maintaining cable bending radius.
3.	2-inch conduit knock-out when 3/0 service cable installed (single-phase service, 120/240V).
4.	3-inch conduit knock-out when 250MCM service cable is installed (single-phase service, 120/240V).
5.	Multi-Position must have blank compartment for cable entrance (either end of assembly).

The following list of Meter-Mounting Devices are examples that meet the requirements set by Hydro One

Single Phase, Three-Wire Service, Self-Contained

120/240V 4-Jaw ANSI Form Factor 2S

SERVICE & TYPE	MANUFACTURER	MODEL	CONDUCTOR SIZE
200A Overhead/Underground	Hydel	EK400ROBC	No.6 – 250MCM Cu/Al
		EK200XL	No. 2 – 350MCM Cu/Al
	Microelectric®	BS2-INTCVBC	No.6 – 250MCM Cu/Al
	Eaton	LMB3-IN	No.6 – 250 MCM Cu/Al

Single Phase, Three-Wire Service, Self-Contained

120/240V 4-Jaw ANSI Form Factor 2S with Breaker

SERVICE & TYPE	MANUFACTURER	MODEL
200A Overhead/Underground	Hydel	JA402R-BC
	Eaton	RCJ2Q Series
	Durham ²	DR Series
200A Overhead	Microelectric®	CO2-G Series

²Contact [Jesstec Industries Inc](#) to order

Single Phase, Three-Wire Service, Self-Contained

120/240V 4-Jaw ANSI Form Factor 2S Specialty Base

SERVICE & TYPE	MANUFACTURER	MODEL
100A or 200A Combination Base and Load-Centre Temp Service	Eaton	RCPM Series
100A or 200A Combination Base with Auto Transfer Switch		EGS Series
100A or 200A Combination Base with Manual Transfer Switch	Eaton	RCJ Series
	Durham ²	SB Series
100A or 200A Overhead/Underground with Load Side Sub Feed Lug	Eaton	LMB3-SF N with EIN2
	Hydel	SLC402RW

²Contact [Jesstec Industries Inc](#) to order

Single Phase, Three-Wire Service, Self-Contained

120/240V 4-Jaw ANSI Form Factor 2S – Multi Position

SERVICE & TYPE	MANUFACTURER	MODEL
200A Main 100A per position Overhead/Underground	Eaton	KN1 Series with EIN1
	Hydel	SDC Series
200A Main 200A per position Overhead/Underground	Hydel	HC22R Series
	Eaton	K2 Series with EIN1
	Microelectric®	BDA2 Series with IN4000-3
400A Main 200A per position Overhead/Underground	Hydel	HC40R Series
	Eaton	K4 Series with EIN1

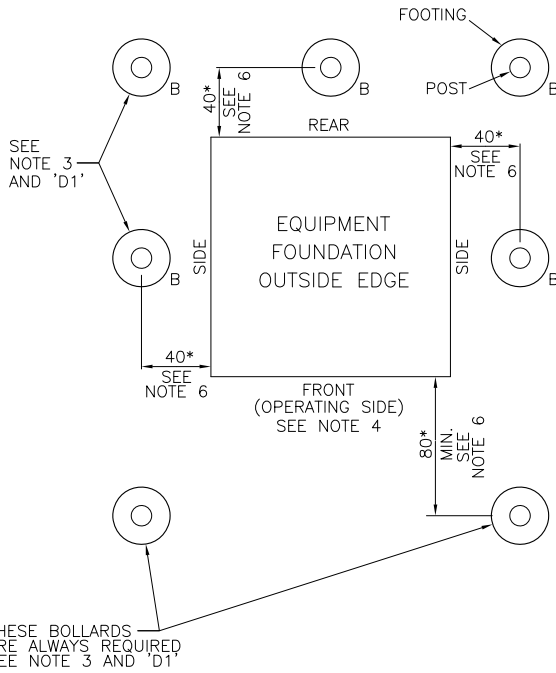
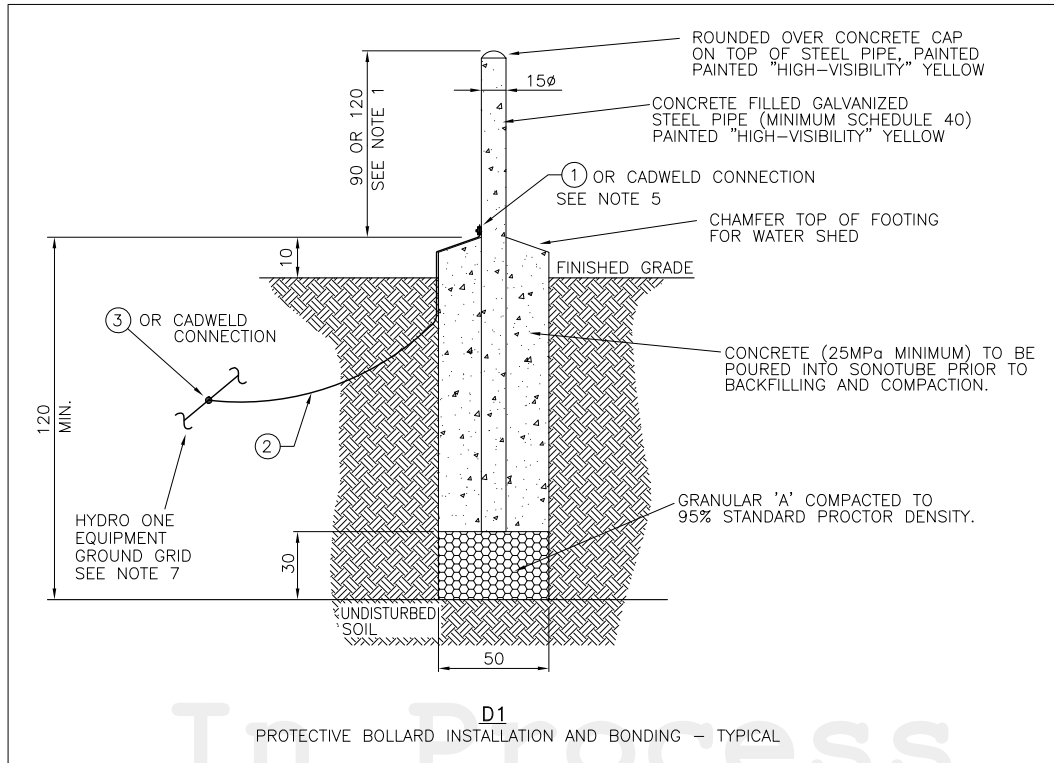
Single Phase, Three-Wire Service, Transformer Rated

120/240 5-Jaw ANSI Form Factor 3S

SERVICE & TYPE	MANUFACTURER	MODEL
400A Meter Socket <i>Must specify with vendor at time of order</i> 1. Overhead or Underground 2. Single or Parallel Cable Run 3. Size of Cable	Hydel	CT4-TSHO
	Microelectric®	JS4B-TLHO with IN4000JS
	Eaton	TCC5-H1 with ECLIN4
	Durham ²	1011897-OH
CM Service Overhead/Underground	Durham ²	1012109 (Overhead/Underground)
	Hydel	CTS405PW-TSHO w/ MSPMK7
	Eaton	TSU5C-H1C

²Contact [Jesstec Industries Inc](#) to order

THE LIST OF THIRD PARTY-MANUFACTURED EQUIPMENT IS PROVIDED FOR YOUR CONVENIENCE ONLY AND DOES NOT IMPLY AN ENDORSEMENT, GUARANTEE, WARRANTY, OR RECOMMENDATION BY HYDRO ONE NETWORKS INC. OR ITS AFFILIATES (AND THEIR RESPECTIVE DIRECTORS, EMPLOYEES, PARTNERS, AND AGENTS) (COLLECTIVELY, “HYDRO ONE”) AND HYDRO ONE MAKES NO REPRESENTATIONS OR WARRANTIES ABOUT ANY PRODUCTS OR SERVICES PROVIDED BY THE PARTIES WHOSE PRODUCES OR SERVICES ARE LISTED. HYDRO ONE IS NOT RESPONSIBLE FOR THE PERFORMANCE OF METER SOCKET BASES AND OTHER EQUIPMENT AND SERVICES PROVIDED BY THIRD PARTIES, INCLUDING, WITHOUT LIMITATION, ANY DEFECTS OR MALFUNCTIONS IN THE EQUIPMENT OR SERVICES THAT RESULTS IN (1) INCORRECT METER READINGS OF CONSUMPTION OF ELECTRICITY, (2) DAMAGES CAUSED TO PROPERTY BELONGING TO OWNER, HYDRO ONE, OR THIRD PARTY, OR (3) PERSONAL INJURY OR DEATH.



NOTES:

1. PROTECTIVE BOLLARD HEIGHT ABOVE GRADE:
 - FOR SINGLE-PHASE EQUIPMENT: 90cm
 - FOR THREE-PHASE EQUIPMENT: 120cm
2. BOLLARDS SHALL BE PROVIDED AS SHOWN IN DESIGN DRAWINGS.
3. BOLLARDS AT 'B' ARE OPTIONAL AND WOULD ONLY BE REQUIRED FOR HIGH TRAFFIC AREAS AND LARGE SIZED EQUIPMENT. REAR AND SIDE CENTER POSITIONS ARE GENERALLY NOT REQUIRED FOR SINGLE-PHASE EQUIPMENT DUE TO THEIR SMALL SIZE. ALSO BOLLARDS AT THE REAR AND SIDE OF THE EQUIPMENT MAY BE OMITTED AT LOCAL DISCRETION IF THE LIKELIHOOD OF DAMAGE/IMPACT IS LOW.
4. LOCATION OF BOLLARDS SHOULD NOT OBSTRUCT EQUIPMENT OPERATION, MAINTENANCE AND REPLACEMENT.
5. WHEN USING COMPRESSION CONNECTOR DRILL THROUGH HOLE IN THE PIPE AND REMOVE PAINT FROM CONNECTION AREA OF THE PIPE. ALTERNATIVELY SUPPLY AND INSTALL STEEL PIPE WITH 1/2" BONDING HARDWARE.
6. DIMENSIONS WITH "*" ARE PREFERRED TO BE 150cm WHERE POSSIBLE.
7. SEE DU12-101-0500 FOR HYDRO ONE EQUIPMENT GROUND GRID DETAILS.

PARTS LIST			
PART No.	MM No.	DESCRIPTION	QTY.
1	30024855	CONNECTOR, COMPRESSION, 1-HOLE, FOR #4 AWG	A/R
2	30014480	CONDUCTOR, BARE, CU, #4	A/R
3	30028496	CONNECTOR, CU, FOR #4 AWG CU WIRE	A/R
MM# = REFER TO SECTION 16 ONLY			A/R = AS REQUIRED

ALL DIMENSIONS IN CENTIMETRES UNLESS OTHERWISE STATED

01	SEPT 2023	ORIGINAL DU-03-212-0500-R4 IS NOW SUPERSEDED BY THIS NEW DRAWING/REVISION. CHANGED TO SECTION 6. GENERAL UPDATES TO DIMENSIONS AND NOTES. UPDATED NOTES 3 & 5. ADDED NOTE 7 AND PARTS LIST. UPDATED FIG.1 & 2 TO MAIN FIGURE AND 'D1'.	PC	MM	MM	MM
Rev No.	Date	Revision Particulars	dwn	ckd	des	app

Drawn By: P.C	Checked By: M.MATEVSKI	Designed By: M.MATEVSKI	Design Approved By: M.MATEVSKI P.Eng.
Scale: N.T.S.	Date: (yyyy/mm/dd) 2021/02/02	Pole ID:	



© Copyright Hydro One Networks Inc. All rights reserved. This drawing may not be reproduced or copied, in whole or in part, in any printed, mechanical, electronic, film, or other distribution and storage media or used in any information storage or retrieval system outside of Hydro One Networks Inc., without the written consent of Hydro One Networks Inc.
Information contained in this drawing is considered to be confidential. Recipients shall only use the drawing for its intended purpose and shall take necessary measures to prevent disclosure or transmittal to outside parties.

Title: PROTECTIVE BOLLARDS INSTALLATION

Drawing No. DU6-107-0500

Rev. No. 01

TITLE BLOCK REV 02 - AUGUST 2014

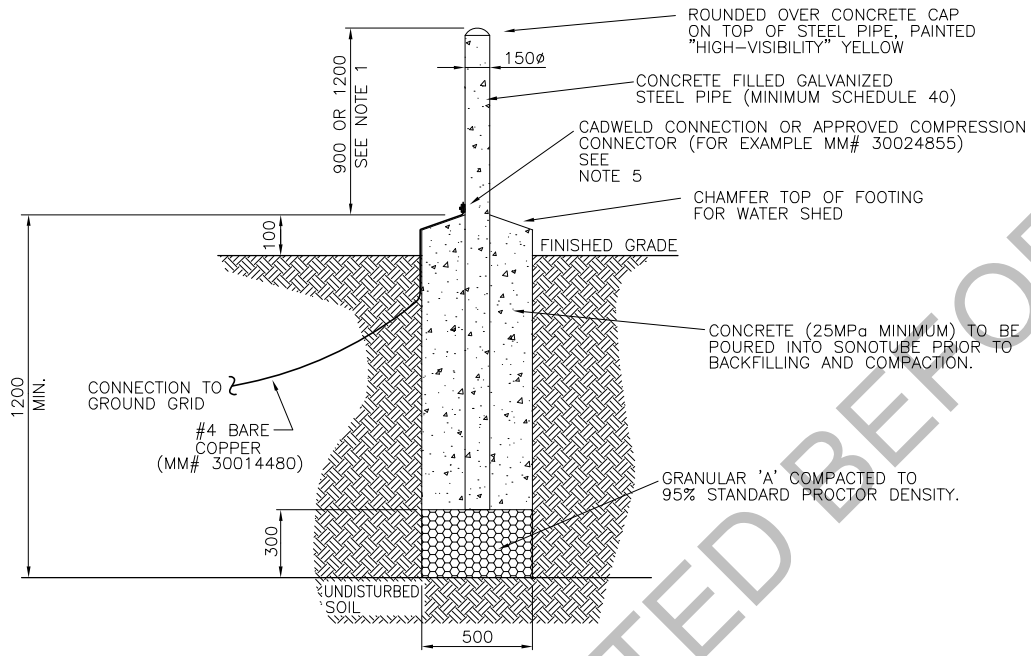


FIG. 1
SECTION A-A
ELEVATION VIEW

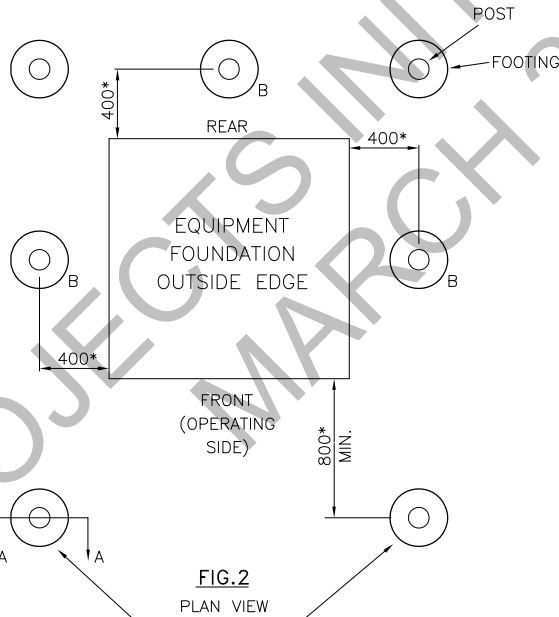


FIG. 2
PLAN VIEW

THESE BOLLARDS ARE NON-OPTIONAL SEE NOTE 3

ALL DIMENSIONS IN MILLIMETRES UNLESS OTHERWISE STATED

NOTES:

1. PROTECTIVE BOLLARD HEIGHT ABOVE GRADE:
FOR SINGLE PHASE EQUIPMENT – 900mm
FOR THREE PHASE EQUIPMENT – 1200mm
2. BOLLARDS SHALL BE PROVIDED AS SHOWN ON DESIGN DRAWINGS.
3. BOLLARDS AT 'B' ARE OPTIONAL AND WOULD ONLY BE REQUIRED FOR HIGH TRAFFIC AREAS AND LARGE SIZED EQUIPMENT. BOLLARDS AT 'B' ARE GENERALLY NOT REQUIRED FOR SINGLE PHASE EQUIPMENT DUE TO THEIR SMALL SIZE. ALSO BOLLARDS AT THE REAR AND SIDE OF THE EQUIPMENT MAY BE OMITTED AT LOCAL DISCRETION IF THE LIKELIHOOD OF DAMAGE/IMPACT IS LOW.
4. LOCATION OF BOLLARDS SHOULD NOT OBSTRUCT EQUIPMENT OPERATION, MAINTENANCE AND REPLACEMENT.
5. WHEN USING COMPRESSION CONNECTOR DRILL THROUGH HOLE IN THE PIPE AND REMOVE PAINT FROM CONNECTION AREA OF THE PIPE.
6. DIMENSIONS WITH * ARE PREFERRED TO BE 1500mm WHERE POSSIBLE

04	SEP 2018	GENERAL UPDATES & NOTE 3 CHANGES. CHANGED TO NEW DWG. & NUMBERING FORMAT. FOR PREVIOUS REVISIONS REFER TO DU-03-212-R3.	SO	PC	AS	PS
03	NOV 2007	NOTE 4 ADDED PREFERRED DIMENSIONS SPECIFIED. COMPRESSION CONNECTOR ADDED.	AD			DP
Rev No.	Date	Revision Particulars	dwn	ckd	des	app

Drawn By: S.O.	Checked By:	Designed By:	Design Approved By:
Scale: N.T.S.	Date: (yyyy/mm/dd) 2011/11/04	Pole ID:	



© Copyright Hydro One Networks Inc. All rights reserved. This drawing may not be reproduced or copied, in whole or in part, in any printed, mechanical, electronic, film, or other distribution and storage media or used in any information storage or retrieval system outside of Hydro One Networks Inc., without the written consent of Hydro One Networks Inc.
Information contained in this drawing is considered to be confidential. Recipients shall only use the drawing for its intended purpose and shall take necessary measures to prevent disclosure or transmittal to outside parties.

Title: PROTECTIVE BOLLARDS INSTALLATION	
Drawing No. DU-03-212-0500	Rev. No. 04